



# Using LIDO

**Linked Heritage Training Workshop**

**Rome, 26-27 October 2011**

**Gordon McKenna**

**International Development Manager**

**Collections Trust, UK**

Collections  
Trust

- **Context**
- **SPECTRUM as a framework**
- **Mapping to LIDO**

**Context**

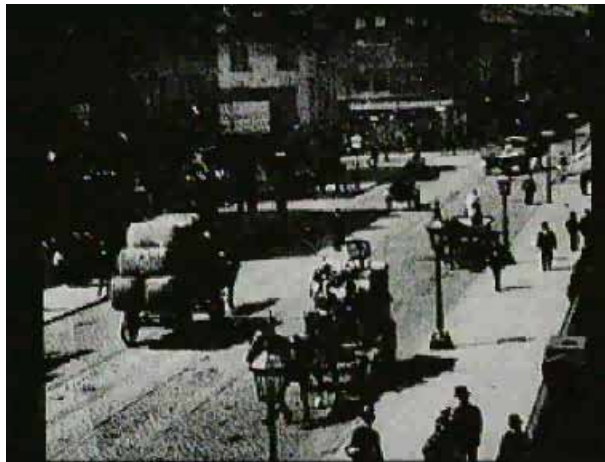
## Context: An European[a] Example



**Louis Le Prince  
(1842-1890)**

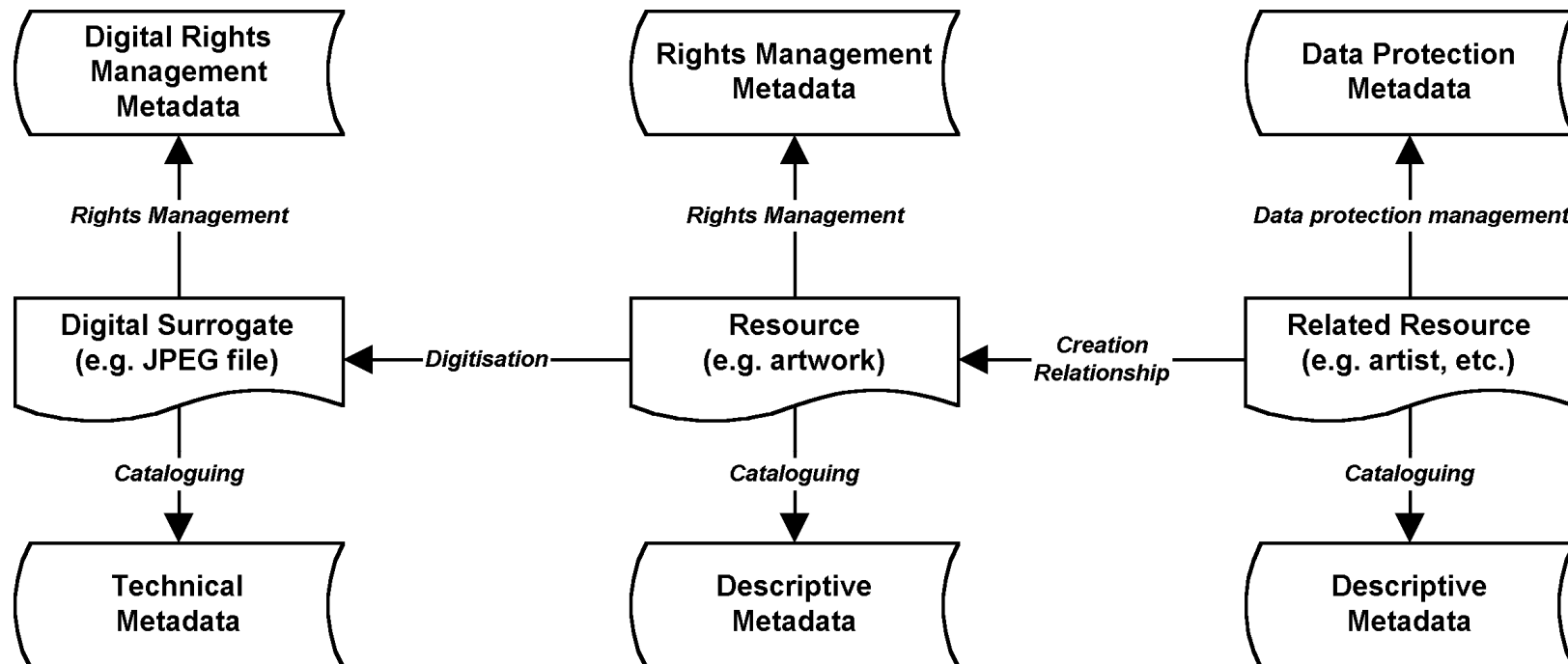


*'Rounday Garden Scene'*

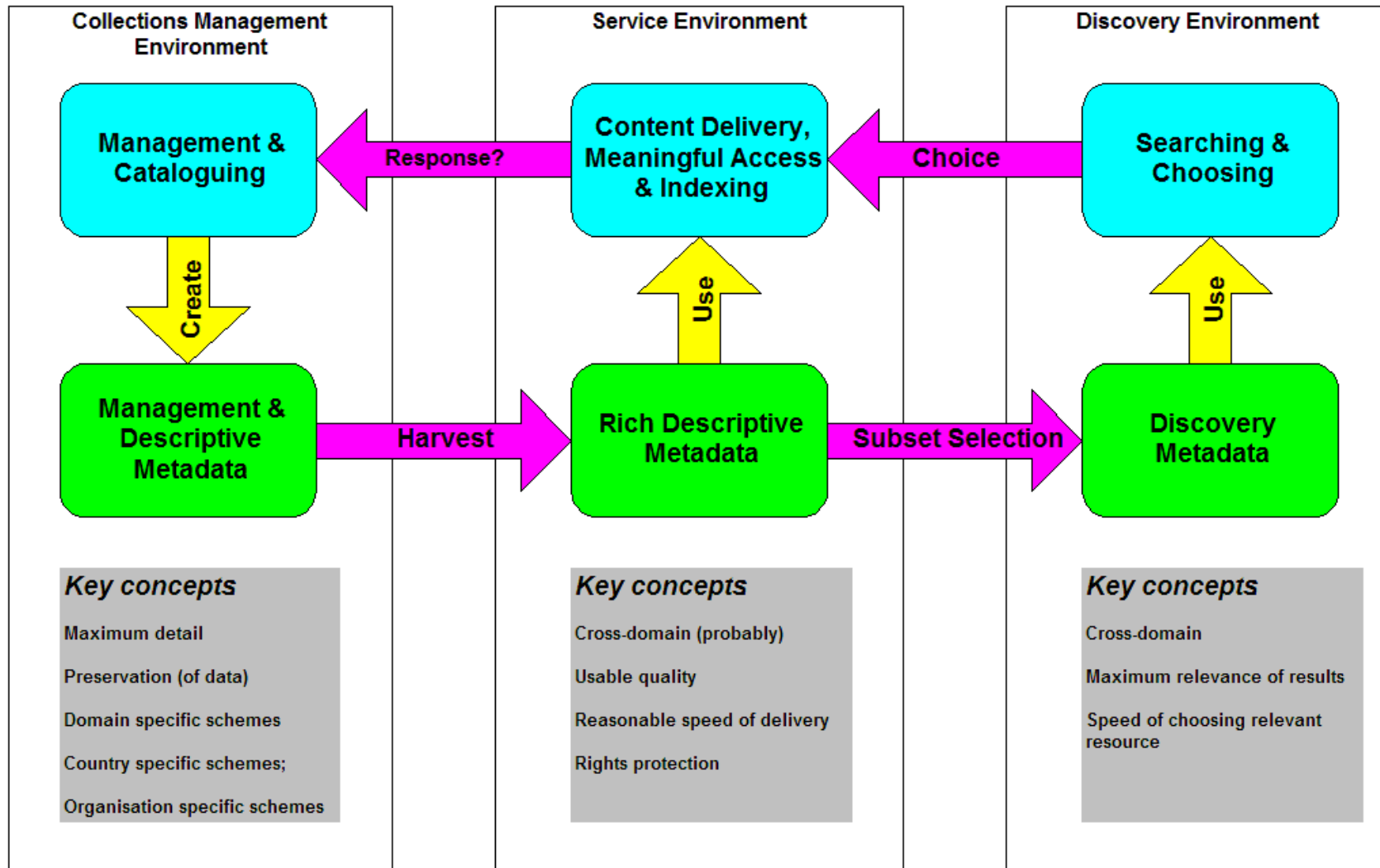


*'Leeds Bridge'*

# Which metadata?



# Metadata use environments



# Making the link with Europeana

<i>Element</i>	<i>Definition and notes</i>	<i>Data requirements</i>
<b>isShownBy</b>	<p>An unambiguous URL reference to the digital object on the content provider's web site in the best available resolution/quality. (i.e. a link to the content as a text, image, sound, or video file <b>not</b> to the webpage with it on)</p> <p>Data here will allow the full functionality of Europeana and the automatic generation of a thumbnail by them.</p> <p>If this cannot be given then you <b>must</b> provide data for <b>isShownAt</b>.</p>	Must be valid URI (e.g. URL)
<b>isShownAt</b>	<p>An unambiguous URL reference to the digital object on the content provider's website in its full information context.</p> <p>If this cannot be given then you <b>must</b> provide data for <b>isShownBy</b>.</p>	Must be valid URI (e.g. URL)
<b>object</b>	<p>For image thumbnails, if you can give a URL to a thumbnail on your website then give that URL here. However these thumbnails smaller than 110 pixels high then it will be scaled up to that size by Europeana.</p> <p>If you do not have a thumbnail then you may give the same data as in <b>isShownby</b> element.</p>	Must be valid URL
<b>type</b>	The Europeana material type of the resource.	Must be: TEXT or IMAGE or SOUND or VIDEO
<b>provider</b>	<p>Name of the organisation that is delivering content to Europeana.</p> <p>If the <b>provider is not an aggregator</b> then use this element.</p> <p>If the <b>provider is an aggregator</b> then use this element for the name of the aggregator. For the name of the <b>provider to the aggregator</b> use the element <b>source</b>.</p>	

# **SPECTRUM as a framework**



- **Collections Management Standard**
  - Created **by** the museum community
- **Procedures:**
  - 21 collection management activities
    - What to do
    - What to record
    - Where to look for help
- **Information requirements:**
  - Information groups
    - Units of information

## Museum Accreditation:

- Object entry
- Loans in
- **Acquisition**
- Location and movement control
- **Cataloguing**
- Loans out
- Object exit
- Retrospective documentation

## Plus:

- Conservation and collections care
- Deaccession and disposal

- **Pre-entry**
- Inventory control
- Transport [large organisations]
- Object condition checking and technical assessment
- Risk management
- Insurance and indemnity management
- Valuation control
- Audit
- **Rights management**
- **Use of collections**
- Loss and damage

- Groups of related Units of information
- Recording information about:
  - Objects (**historical** & managerial)
  - Procedures (themselves) [**Acquisition**]
  - Addresses
  - **Dates**
  - Locations (in the organisation)
  - **Organisations**
  - **Peoples** (ethnographic)
  - **Persons**
  - **Places**
  - Record management

## Relevant Information groups

- Object identification information
- Object collection information
- Object production information
- Object description information
- Object history and association information
- Object rights information
- Acquisition information
- Use of collections information
- Reference information
- Date information
- Organisation information
- Person information
- Place information

# Mapping to LIDO

# Object identification information

SPECTRUM Unit of information	LIDO elements path in the ATHENA system – element containing data in bold
<i>Object number</i>	[Object Identification] ⇒ repositoryWrap ⇒ repositorySet ⇒ <b>workID</b> (no <b>type</b> attribute)
<i>Other number</i>	[Object Identification] ⇒ repositoryWrap ⇒ repositorySet ⇒ <b>workID</b> ( <b>type</b> attribute = data from <i>Other number type</i> Unit)
<i>Other number type</i>	[See above]
<i>Brief description</i>	[Object Identification] ⇒ objectDescriptionWrap ⇒ objectDescriptionSet (no <b>type</b> attribute) ⇒ <b>descriptiveNoteValue</b>
<i>Comments</i>	[Object Identification] ⇒ objectDescriptionWrap ⇒ objectDescriptionSet ( <b>type</b> attribute = 'Comments') ⇒ <b>descriptiveNoteValue</b>
<i>Distinguishing features</i>	[Object Identification] ⇒ objectDescriptionWrap ⇒ objectDescriptionSet ( <b>type</b> attribute = 'Distinguishing-features') ⇒ <b>descriptiveNoteValue</b>
<i>Number of objects</i>	[Object Identification] ⇒ objectDescriptionWrap ⇒ objectDescriptionSet ( <b>type</b> attribute = 'Number-of-objects') ⇒ <b>descriptiveNoteValue</b>
<i>Object name</i> [if no title only]	[Object Identification] ⇒ titleWrap ⇒ titleSet ⇒ <b>appellationValue</b>
<i>Object name</i>	[Object Classification] ⇒ objectWorkTypeWrap ⇒ objectWorkType ⇒ <b>term</b>
<i>Title</i>	[Object Identification] ⇒ titleWrap ⇒ titleSet ⇒ <b>appellationValue</b>

# Object production information

SPECTRUM Unit of information	LIDO elements path in the ATHENA system – element containing data in bold
[SPECTRUM event type term]	[Event] ⇒ eventSet ⇒ event ⇒ eventType ⇒ <b>term</b> (with data = 'creation')
<i>Object production date</i> [single string]	[Event] ⇒ eventSet ⇒ event ⇒ eventDate ⇒ <b>displayDate</b>
<i>Object production date</i> [earliest date]	[Event] ⇒ eventSet ⇒ event ⇒ eventDate ⇒ date ⇒ <b>earliestDate</b>
<i>Object production date</i> [latest date]	[Event] ⇒ eventSet ⇒ event ⇒ eventDate ⇒ date ⇒ <b>latestDate</b>
<i>Object production date</i> [period]	[Event] ⇒ eventSet ⇒ event ⇒ eventDate ⇒ periodName ⇒ <b>term</b>
<i>Object production organisation</i> [single string]	[Event] ⇒ eventSet ⇒ event ⇒ eventActor ⇒ <b>displayActorInRole</b>
<i>Object production organisation</i> [analysed]	[Event] ⇒ eventSet ⇒ event ⇒ eventActor ⇒ actorInRole ⇒ actor ⇒ [See <b>Organisation information</b> group below]
<i>Object production people</i>	[Event] ⇒ eventSet ⇒ event ⇒ culture ⇒ <b>term</b>
<i>Object production person</i> [single string]	[Event] ⇒ eventSet ⇒ event ⇒ eventActor ⇒ <b>displayActorInRole</b>
<i>Object production person</i> [analysed]	[Event] ⇒ eventSet ⇒ event ⇒ eventActor ⇒ actorInRole ⇒ actor ⇒ [See <b>Person information</b> group below]
<i>Object production place</i> [single string]	[Event] ⇒ eventSet ⇒ event ⇒ eventPlace ⇒ <b>displayPlace</b>
<i>Object production place</i> [controlled – for each term]	[Event] ⇒ eventSet ⇒ event ⇒ eventPlace ⇒ place ⇒ namePlaceSet ⇒ <b>appellationValue</b>
<i>Technique</i>	[Event] ⇒ eventSet ⇒ event ⇒ eventMaterialsTech ⇒ materialsTech ⇒ termMaterialsTech (attribute <b>type</b> = 'Technique') ⇒ <b>term</b>



# Object collection information

SPECTRUM Unit of information	LIDO elements path in the ATHENA system – element containing data in bold
[SPECTRUM event type term]	[Event] ⇒ eventSet ⇒ event ⇒ eventType ⇒ <b>term</b> (with data = 'collecting' or 'finding' or 'excavation')
<i>Field collection date</i> [single string]	[Event] ⇒ eventSet ⇒ event ⇒ eventDate ⇒ <b>displayDate</b>
<i>Field collection date</i> [earliest date]	[Event] ⇒ eventSet ⇒ event ⇒ eventDate ⇒ date ⇒ <b>earliestDate</b>
<i>Field collection date</i> [latest date]	[Event] ⇒ eventSet ⇒ event ⇒ eventDate ⇒ date ⇒ <b>latestDate</b>
<i>Field collection date</i> [Date - period]	[Event] ⇒ eventSet ⇒ event ⇒ eventDate ⇒ periodName ⇒ <b>term</b>
<i>Field collection event name</i>	[Event] ⇒ eventSet ⇒ event ⇒ eventName ⇒ <b>appellationValue</b>
<i>Field collection event reference number</i>	[Event] ⇒ eventSet ⇒ event ⇒ <b>eventID</b>
<i>Field collection method</i>	[Event] ⇒ eventSet ⇒ event ⇒ eventMethod ⇒ <b>term</b>
<i>Field collection number</i>	[Object Identification] ⇒ repositoryWrap ⇒ repositorySet ⇒ <b>workID</b> ( <b>type</b> attribute = 'Field-collection-number')
<i>Field collection place</i> [single string]	[Event] ⇒ eventSet ⇒ event ⇒ eventPlace ⇒ <b>displayPlace</b>
<i>Field collection place</i> [analysed]	[Event] ⇒ eventSet ⇒ event ⇒ eventPlace ⇒ place ⇒ [See <b>Place information</b> group below]
<i>Field collector</i> (Org or Per) [single string]	[Event] ⇒ eventSet ⇒ event ⇒ eventActor ⇒ <b>displayActorInRole</b>
<i>Field collector</i> (Org or Per) [analysed]	[Event] ⇒ eventSet ⇒ event ⇒ eventActor ⇒ actorInRole ⇒ actor ⇒ [See <b>Organisation information</b> or <b>Person information</b> groups below]
<i>Geological complex name</i>	[Event] ⇒ eventSet ⇒ event ⇒ eventPlace ⇒ place ⇒ placeClassification ( <b>type</b> attribute = 'Geological-complex') ⇒ <b>term</b>
<i>Habitat</i>	[Event] ⇒ eventSet ⇒ event ⇒ eventPlace ⇒ place ⇒ placeClassification ( <b>type</b> attribute = 'Habitat') ⇒ <b>term</b>
<i>Stratigraphic unit name</i>	[Event] ⇒ eventSet ⇒ event ⇒ eventPlace ⇒ place ⇒ placeClassification ( <b>type</b> attribute = 'Stratigraphic-unit') ⇒ <b>term</b>



# Object description information 1

SPECTRUM Unit of information	LIDO elements path in the ATHENA system – element containing data in bold
Age	[Object Classification] ⇒ classificationWrap ⇒ classification ⇒ <b>term</b> (attribute <b>type</b> = 'Age')
Colour	[Object Classification] ⇒ classificationWrap ⇒ classification ⇒ <b>term</b> (attribute <b>type</b> = 'Colour')
<i>Content - activity</i>	[Object Relation] ⇒ subjectWrap ⇒ subjectSet ⇒ subject ⇒ subjectConcept ⇒ <b>term</b> (attribute <b>type</b> = 'Content-activity')
<i>Content - concept</i>	[Object Relation] ⇒ subjectWrap ⇒ subjectSet ⇒ subject ⇒ subjectConcept ⇒ <b>term</b> (attribute <b>type</b> = 'Content-concept')
<i>Content - date</i> [simple string]	[Object Relation] ⇒ subjectWrap ⇒ subjectSet ⇒ subject ⇒ subjectDate ⇒ <b>displayDate</b>
<i>Content - date</i> [earliest]	[Object Relation] ⇒ subjectWrap ⇒ subjectSet ⇒ subject ⇒ subjectDate ⇒ date ⇒ <b>earliestDate</b>
<i>Content - date</i> [latest]	[Object Relation] ⇒ subjectWrap ⇒ subjectSet ⇒ subject ⇒ subjectDate ⇒ date ⇒ <b>latestDate</b>
<i>Content - date</i> [period]	[Object Relation] ⇒ subjectWrap ⇒ subjectSet ⇒ subject ⇒ subjectDate ⇒ date ⇒ periodName ⇒ <b>term</b>
<i>Content - description</i>	[Object Relation] ⇒ subjectWrap ⇒ subjectSet ⇒ <b>displaySubject</b>
<i>Content - event name</i>	[Object Relation] ⇒ subjectWrap ⇒ subjectSet ⇒ subject ⇒ subjectEvent ⇒ event ⇒ eventName ⇒ <b>appellationValue</b>
<i>Content - note</i>	[Object Relation] ⇒ subjectWrap ⇒ subjectSet ⇒ <b>displaySubject</b> (attribute <b>label</b> = 'Content-note')
<i>Content - object</i>	[Object Relation] ⇒ subjectWrap ⇒ subjectSet ⇒ subject ⇒ subjectObject ⇒ object ⇒ <b>objectNote</b>



## Object description information 2

SPECTRUM Unit of information	LIDO elements path in the ATHENA system – element containing data in bold
<i>Content - organisation</i> [simple string]	[Object Relation] ⇒ subjectWrap ⇒ subjectSet ⇒ subject ⇒ subjectActor ⇒ <b>displayActor</b>
<i>Content - organisation</i> [analysed]	[Object Relations] ⇒ subjectWrap ⇒ subjectSet ⇒ subject ⇒ subjectActor ⇒ actor ⇒ [see <b>Organisation Information</b> group below]
<i>Content - other</i>	[Object Relation] ⇒ subjectWrap ⇒ subjectSet ⇒ <b>displaySubject</b>
<i>Content - people</i>	[Object Relation] ⇒ subjectWrap ⇒ subjectSet ⇒ subject ⇒ subjectConcept (attribute <b>type</b> = 'Culture') ⇒ <b>term</b>
<i>Content - person</i> [simple string]	[Object Relation] ⇒ subjectWrap ⇒ subjectSet ⇒ subject ⇒ subjectActor ⇒ <b>displayActor</b>
<i>Content - person</i> [analysed]	[Object Relations] ⇒ subjectWrap ⇒ subjectSet ⇒ subject ⇒ subjectActor ⇒ actor ⇒ [see <b>Organisation Information</b> group below]
<i>Content - place</i> [simple string]	[Object Relation] ⇒ subjectWrap ⇒ subjectSet ⇒ subject ⇒ subjectPlace ⇒ <b>displayPlace</b>
<i>Content - place</i> [controlled terms]	[Object Relation] ⇒ subjectWrap ⇒ subjectSet ⇒ subject ⇒ subjectPlace ⇒ place ⇒ namePlaceSet ⇒ <b>appellationValue</b> [see also <b>Place Information</b> group below]
<i>Content - position</i>	[Object Relation] ⇒ subjectWrap ⇒ subjectSet ⇒ subject ⇒ <b>extentSubject</b>
<i>Content note</i>	[Object Relation] ⇒ subjectWrap ⇒ subjectSet ⇒ <b>displaySubject</b> (attribute <b>label</b> = 'Content-note')
<i>Copy number</i>	[Object Identification] ⇒ displayStateEditionWrap ⇒ <b>displayEdition</b> (attribute <b>label</b> = 'Copy-number')

# Object description information 3

SPECTRUM Unit of information	LIDO elements path in the ATHENA system – element containing data in bold
[single string for dimensions]	[Object Identification] ⇒ objectMeasurementsWrap ⇒ objectMeasurementsSet ⇒ <b>displayObjectMeasurements</b>
<i>Dimension</i> [for each dimension of each part]	[Object Identification] ⇒ objectMeasurementsWrap ⇒ objectMeasurementsSet ⇒ objectMeasurements ⇒ measurementsSet ⇒ <b>measurementType</b>
<i>Dimension measured part</i>	[Object Identification] ⇒ objectMeasurementsWrap ⇒ objectMeasurementsSet ⇒ objectMeasurements ⇒ <b>extentMeasurements</b>
<i>Dimension value</i>	[Object Identification] ⇒ objectMeasurementsWrap ⇒ objectMeasurementsSet ⇒ objectMeasurements ⇒ measurementsSet ⇒ <b>measurementValue</b>
<i>Dimension measurement unit</i>	[Object Identification] ⇒ objectMeasurementsWrap ⇒ objectMeasurementsSet ⇒ objectMeasurements ⇒ measurementsSet ⇒ <b>measurementUnit</b>
<i>Dimension value qualifier</i>	[Object Identification] ⇒ objectMeasurementsWrap ⇒ objectMeasurementsSet ⇒ objectMeasurements ⇒ <b>qualifierMeasurements</b>
<i>Edition number</i>	[Object Identification] ⇒ displayStateEditionWrap ⇒ <b>displayEdition</b> (attribute <b>label</b> = 'Edition-number')
<i>Form</i>	[Object Classification] ⇒ classificationWrap ⇒ classification ⇒ <b>term</b> (attribute <b>type</b> = 'Form')
<i>Inscription description</i>	[Object Identification] ⇒ inscriptionsWrap ⇒ inscriptions ⇒ inscriptionDescription ⇒ <b>descriptiveNoteValue</b>
<i>Inscription transcription</i>	[Object Identification] ⇒ inscriptionsWrap ⇒ inscriptions ⇒ inscriptionTranscription ⇒ <b>descriptiveNoteValue</b>

# Object description information 4

SPECTRUM Unit of information	LIDO elements path in the ATHENA system – element containing data in bold
<i>Material</i>	[Event] ⇒ eventSet ⇒ event ⇒ eventMaterialsTech ⇒ materialsTech ⇒ termMaterialsTech (attribute <b>type</b> = 'material') ⇒ <b>term</b>
<i>Object status</i>	[Object Classification] ⇒ classificationWrap ⇒ classification ⇒ <b>term</b> (attribute <b>type</b> = 'Object-status')
<i>Phase</i>	[Object Classification] ⇒ classificationWrap ⇒ classification ⇒ <b>term</b> (attribute <b>type</b> = 'Phase')
<i>Physical description</i>	[Object Identification] ⇒ objectDescriptionWrap ⇒ objectDescriptionSet ( <b>type</b> attribute = 'Physical-description') ⇒ <b>descriptiveNoteValue</b>
<i>Sex</i>	[Object Classification] ⇒ classificationWrap ⇒ classification ⇒ <b>term</b> (attribute <b>type</b> = 'Sex')
<i>Style</i>	[Object Classification] ⇒ classificationWrap ⇒ classification ⇒ <b>term</b> (attribute <b>type</b> = 'Style')

[single string for technical attributes]	[Object Identification] ⇒ objectMeasurementsWrap ⇒ objectMeasurementsSet ⇒ <b>displayObjectMeasurements</b>
<i>Technical attribute</i>	[Object Identification] ⇒ objectMeasurementsWrap ⇒ objectMeasurementsSet ⇒ objectMeasurements ⇒ measurementsSet ⇒ <b>measurementType</b>
<i>Technical attribute measurement</i>	[Object Identification] ⇒ objectMeasurementsWrap ⇒ objectMeasurementsSet ⇒ objectMeasurements ⇒ measurementsSet ⇒ <b>measurementValue</b>
<i>Technical attribute measurement unit</i>	[Object Identification] ⇒ objectMeasurementsWrap ⇒ objectMeasurementsSet ⇒ objectMeasurements ⇒ measurementsSet ⇒ <b>measurementUnit</b>



# Object history and association information 1

SPECTRUM Unit of information	LIDO elements path in the ATHENA system – element containing data in bold
<i>Association type</i>	[Event] ⇒ eventSet ⇒ event ⇒ eventType ⇒ <b>term</b>
<i>Association note</i>	[Event] ⇒ eventSet ⇒ event ⇒ eventDescriptionSet ⇒ <b>descriptiveNoteValue</b>
<i>Associated activity</i>	[Object Relation] ⇒ subjectWrap ⇒ subjectSet ⇒ subject ⇒ subjectConcept (attribute <b>type</b> = 'Associated-activity') ⇒ <b>term</b>
<i>Associated concept</i>	[Object Relation] ⇒ subjectWrap ⇒ subjectSet ⇒ subject ⇒ subjectConcept (attribute <b>type</b> = 'Associated-concept') ⇒ <b>term</b>
<i>Associated cultural affinity</i>	[Event] ⇒ eventSet ⇒ event ⇒ culture ⇒ <b>term</b>
<i>Associated date</i> [single string]	[Event] ⇒ eventSet ⇒ event ⇒ eventDate ⇒ <b>displayDate</b>
<i>Associated date</i> [earliest]	[Event] ⇒ eventSet ⇒ event ⇒ eventDate ⇒ date ⇒ <b>earliestDate</b>
<i>Associated date</i> [latest]	[Event] ⇒ eventSet ⇒ event ⇒ eventDate ⇒ date ⇒ <b>latestDate</b>
<i>Associated date</i> [period]	[Event] ⇒ eventSet ⇒ event ⇒ eventDate ⇒ periodName ⇒ <b>term</b>
<i>Associated event date</i> [single string]	[Event] ⇒ eventSet ⇒ event ⇒ eventDate ⇒ <b>displayDate</b>
<i>Associated event date</i> [earliest]	[Event] ⇒ eventSet ⇒ event ⇒ eventDate ⇒ date ⇒ <b>earliestDate</b>
<i>Associated event date</i> [latest]	[Event] ⇒ eventSet ⇒ event ⇒ eventDate ⇒ date ⇒ <b>latestDate</b>
<i>Associated event date</i> [period]	[Event] ⇒ eventSet ⇒ event ⇒ eventDate ⇒ periodName ⇒ <b>term</b>
<i>Associated event name</i>	[Event] ⇒ eventSet ⇒ event ⇒ eventName ⇒ <b>appellationValue</b>
<i>Associated event organisation</i> [single string]	[Event] ⇒ eventSet ⇒ event ⇒ actorInRole ⇒ <b>displayActorInRole</b>
<i>Associated event people</i> [single string]	[Event] ⇒ eventSet ⇒ event ⇒ culture ⇒ <b>term</b>



# Object history and association information 2

SPECTRUM Unit of information	LIDO elements path in the ATHENA system – element containing data in bold
<i>Associated event person</i> [single string]	[Event] ⇒ eventSet ⇒ event ⇒ eventActor ⇒ <b>displayActorInRole</b>
<i>Associated event person</i> [analysed]	[Event] ⇒ eventSet ⇒ event ⇒ eventActor ⇒ actorInRole ⇒ actor ⇒ [See <b>Person information</b> group below]
<i>Associated event place</i> [single string]	[Event] ⇒ eventSet ⇒ event ⇒ eventPlace ⇒ <b>displayPlace</b>
<i>Associated event place</i> [controlled terms]	[Event] ⇒ eventSet ⇒ event ⇒ eventPlace ⇒ place ⇒ namePlaceSet ⇒ <b>appellationValue</b> [see also <b>Place Information</b> group below]

<i>Associated object</i>	[Event] ⇒ eventSet ⇒ event ⇒ thingPresent ⇒ <b>displayObject</b>
<i>Associated organisation</i> [single string]	[Event] ⇒ eventSet ⇒ event ⇒ eventActor ⇒ <b>displayActorInRole</b>
<i>Associated organisation</i> [analysed]	[Event] ⇒ eventSet ⇒ event ⇒ eventActor ⇒ actorInRole ⇒ actor ⇒ [See <b>Organisation information</b> group below]
<i>Associated people</i>	[Event] ⇒ eventSet ⇒ event ⇒ culture ⇒ <b>term</b>
<i>Associated place</i> [single string]	[Event] ⇒ eventSet ⇒ event ⇒ eventPlace ⇒ <b>displayPlace</b>
<i>Associated place</i> [controlled terms]	[Event] ⇒ eventSet ⇒ event ⇒ eventPlace ⇒ place ⇒ namePlaceSet ⇒ <b>appellationValue</b> [see also <b>Place Information</b> group below]



# Object history and association information 3

SPECTRUM Unit of information	LIDO elements path in the ATHENA system – element containing data in bold
<i>Object history note</i>	[Object Identification] ⇒ objectDescriptionWrap ⇒ objectDescriptionSet ( <b>type</b> attribute = 'Object-history-note') ⇒ <b>descriptiveNoteValue</b>
[SPECTRUM event type term]	[Event] ⇒ eventSet ⇒ event ⇒ eventType ⇒ <b>term</b> (with data = 'ownership')
<i>Owner</i> (Org or Per) [single string]	[Event] ⇒ eventSet ⇒ event ⇒ eventActor ⇒ <b>displayActorInRole</b>
<i>Owner</i> (Org or Per) [analysed]	[Event] ⇒ eventSet ⇒ event ⇒ eventActor ⇒ actorInRole ⇒ actor ⇒ [See <b>Organisation information</b> or <b>Person information</b> groups below]
<i>Ownership dates</i> [single string]	[Event] ⇒ eventSet ⇒ event ⇒ eventDate ⇒ <b>displayDate</b>
<i>Ownership dates</i> [earliest date]	[Event] ⇒ eventSet ⇒ event ⇒ eventDate ⇒ date ⇒ <b>earliestDate</b>
<i>Ownership dates</i> [latest date]	[Event] ⇒ eventSet ⇒ event ⇒ eventDate ⇒ date ⇒ <b>latestDate</b>
<i>Ownership dates</i> [period]	[Event] ⇒ eventSet ⇒ event ⇒ eventDate ⇒ periodName ⇒ <b>term</b>
<i>Ownership place</i> [single string]	[Event] ⇒ eventSet ⇒ event ⇒ eventPlace ⇒ <b>displayPlace</b>
<i>Ownership place</i> [controlled – for each term]	[Event] ⇒ eventSet ⇒ event ⇒ eventPlace ⇒ place ⇒ namePlaceSet ⇒ <b>appellationValue</b> [see also <b>Place Information</b> group below]
<i>Related object number</i>	[Event] ⇒ eventSet ⇒ event ⇒ thingPresent ⇒ object ⇒ <b>objectID</b>



## Object rights information

SPECTRUM Unit of information	LIDO elements path in the ATHENA system – element containing data in bold
<i>Right begin date</i>	[Rights Work] ⇒ rightsWorkSet ⇒ rightsDate ⇒ <b>earliestDate</b>
<i>Right holder</i> (Org, Peo, Per)	[Rights Work] ⇒ rightsWorkSet ⇒ rightsHolder ⇒ legalBodyName ⇒ <b>appellationValue</b>
<i>Right type</i> [usually copyright here]	[Rights Work] ⇒ rightsWorkSet ⇒ <b>rightsType</b>
[Credit line referring to copyright in general]	[Rights Work] ⇒ rightsWorkSet ⇒ <b>creditLine</b>

# Acquisition information

SPECTRUM Unit of information	LIDO elements path in the ATHENA system – element containing data in bold
[SPECTRUM event type term]	[Event] ⇒ eventSet ⇒ event ⇒ eventType ⇒ <b>term</b> (with data = 'acquisition')
<i>Acquisition date</i>	[Event] ⇒ eventSet ⇒ event ⇒ eventDate ⇒ <b>displayDate</b>
<i>Acquisition method</i>	[Event] ⇒ eventSet ⇒ event ⇒ eventMethod ⇒ <b>term</b>

# Use of collections information

SPECTRUM Unit of information	LIDO elements path in the ATHENA system – element containing data in bold
[SPECTRUM event type term]	[Event] ⇒ eventSet ⇒ event ⇒ eventType ⇒ <b>term</b> (with data = 'exhibition')

<i>Exhibition reference number</i>	[Event] ⇒ eventSet ⇒ event ⇒ <b>eventID</b>
<i>Exhibition begin date</i>	[Event] ⇒ eventSet ⇒ event ⇒ eventDate ⇒ date ⇒ <b>earliestDate</b>
<i>Exhibition end date</i>	[Event] ⇒ eventSet ⇒ event ⇒ eventDate ⇒ date ⇒ <b>latestDate</b>
<i>Exhibition title</i>	[Event] ⇒ eventSet ⇒ event ⇒ eventName ⇒ <b>appellationValue</b>
<i>Venue (Org)</i>	[Event] ⇒ eventSet ⇒ event ⇒ actorInRole ⇒ <b>displayActorInRole</b>

## Reference information

SPECTRUM Unit of information	LIDO elements path in the ATHENA system – element containing data in bold
<i>Reference</i> [for online digital image of the object]	[Resource] ⇒ resourceSet ⇒ resourceRepresentation ( <b>type</b> attribute = image_master) ⇒ <b>linkResource</b> <b>AND</b> [Resource] ⇒ resourceSet ⇒ <b>resourceType</b> [with data = 'Digital Image']
<i>Reference</i> [for online web page containing digital image of the object in context]	[Record] ⇒ recordInfoSet ⇒ <b>recordInfoLink</b>
<i>Reference</i> [for online suitable thumbnail digital image of the object]	[Resource] ⇒ resourceSet ⇒ resourceRepresentation ( <b>type</b> attribute = image_thumb) ⇒ <b>linkResource</b> <b>AND</b> [Resource] ⇒ resourceSet ⇒ <b>resourceType</b> [with data = 'Digital Image']
<i>Catalogue number</i>	[Object Identification] ⇒ displayStateEditionWrap ⇒ <b>displayEdition</b> (attribute <b>label</b> = 'Catalogue-number')

SPECTRUM Unit of information	LIDO elements path in the ATHENA system – element containing data in bold
<i>Date - earliest/single</i>	[Wrapper elements] ⇒ date ⇒ <b>earliestDate</b>
<i>Date - latest</i>	[Wrapper elements] ⇒ date ⇒ <b>latestDate</b>
<i>Date - period</i>	[Wrapper elements] ⇒ date ⇒ periodName ⇒ <b>term</b>

## Organisation information

SPECTRUM Unit of information	LIDO elements path in the ATHENA system – element containing data in bold
Organisation's additions to name	[Wrapper elements] ⇒ actor ⇒ nameActorSet ⇒ <b>appellationValue</b> (attribute <b>type</b> = 'Additions-to-name')
Organisation's dissolution date	[Wrapper elements] ⇒ actor ⇒ vitalDatesActor ⇒ latestDate (attribute <b>type</b> = 'dissolution-date')
Organisation's foundation date	[Wrapper elements] ⇒ actor ⇒ vitalDatesActor ⇒ earliestDate (attribute <b>type</b> = 'foundation-date')
Organisation's foundation place	[Wrapper elements] ⇒ actor ⇒ nationalityActor ⇒ <b>term</b>
Organisation's reference number	[Wrapper elements] ⇒ actor ⇒ <b>actorID</b>

SPECTRUM Unit of information	LIDO elements path in the ATHENA system – element containing data in bold
<i>Person's additions to name</i>	[Wrapper elements] ⇒ actor ⇒ nameActorSet ⇒ <b>appellationValue</b> (attribute <b>type</b> = 'Additions-to-name')
<i>Person's association</i>	[Wrapper elements] ⇒ actor ⇒ roleActor ⇒ <b>term</b>
<i>Person's birth date</i>	[Wrapper elements] ⇒ actor ⇒ vitalDatesActor ⇒ earliestDate (attribute <b>type</b> = 'birth-date')
<i>Person's death date</i>	[Wrapper elements] ⇒ actor ⇒ vitalDatesActor ⇒ latestDate (attribute <b>type</b> = 'death-date')
<i>Person's forenames</i>	[Wrapper elements] ⇒ actor ⇒ nameActorSet ⇒ <b>appellationValue</b> (attribute <b>type</b> = 'Forenames')
<i>Person's gender</i>	[Wrapper elements] ⇒ actor ⇒ <b>genderActor</b>
<i>Person's group</i>	[Wrapper elements] ⇒ actor ⇒ nationalityActor ⇒ <b>term</b> (attribute <b>label</b> = 'Cultural-group')
<i>Person's nationality</i>	[Wrapper elements] ⇒ actor ⇒ nationalityActor ⇒ <b>term</b>
<i>Person's reference number</i>	[Wrapper elements] ⇒ actor ⇒ <b>actorID</b>
<i>Person's surname</i>	[Wrapper elements] ⇒ actor ⇒ nameActorSet ⇒ <b>appellationValue</b> (attribute <b>type</b> = 'Surname')
<i>Person's title</i>	[Wrapper elements] ⇒ actor ⇒ nameActorSet ⇒ <b>appellationValue</b> (attribute <b>type</b> = 'Title')

## Place information

SPECTRUM Unit of information	LIDO elements path in the ATHENA system – element containing data in bold
<i>Place name</i>	[Wrapper elements] ⇒ place ⇒ namePlaceSet ⇒ <b>appellationValue</b> (attribute <b>type</b> = [data from <i>Place name type</i> Unit])
<i>Place name type</i>	[see above]
<i>Place reference number</i>	[Wrapper elements] ⇒ place ⇒ <b>placeID</b> (attribute <b>type</b> = [data from <i>Place reference number type</i> Unit])
<i>Place reference number type</i>	[see above]





# ESE provider and source elements

## *Content from an organisation (not an aggregator):*

Data	LIDO elements path in the Linked Heritage system – element containing data in bold
Name of the organisation	[Record] ⇒ recordSource ⇒ legalBodyName ⇒ <b>appellationValue</b>

## *Content from an aggregator with many source organisations:*

Data	LIDO elements path in the Linked Heritage system – element containing data in bold
Name of the aggregator	[Record] ⇒ recordSource (attribute <b>type</b> = 'aggregator') ⇒ legalBodyName ⇒ <b>appellationValue</b>
Name of the source organisation	[Object Identification] ⇒ repositoryWrap ⇒ repositorySet ⇒ repositoryName ⇒ legalBodyName ⇒ <b>appellationValue</b>